

Steam Distiller Model 9000™

# Tuttnauer Steam Distiller

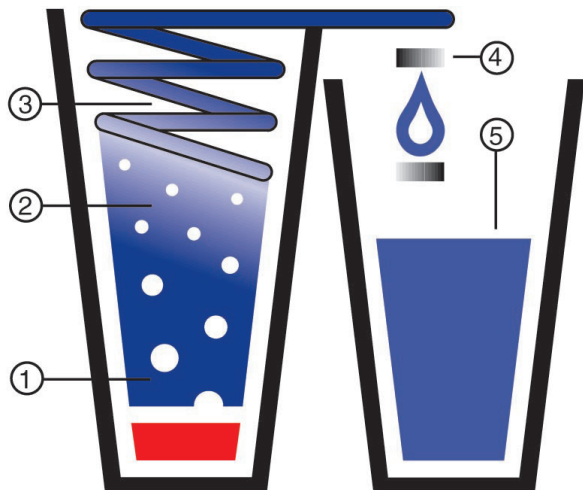


## Pure Clean Water, Made Simple...

- Water purification by steam distillation & carbon filtration
- Effectively removes most tap water impurities
- Features automatic shut-off after 1 gallon cycle
- Includes collector/storage bottle

# Steam Distiller Model 9000™

**Distillation Effectively Removes Contaminants such as Bacteria, Particles, Dissolved Solids and VOCs.**



- Contemporary Euro-Style Design.
- Manual Fill -No Water Hookups.
- Automatic Shut-Off.
- Post Carbon Treatment System.
- Stainless Steel Condenser -Not Aluminum.
- External Heating Element for Long Life.
- Fan-Delayed Start for Improved Efficiency.
- UL Listed #28KL.
- EST #46050JP01.
- USA Patent Pending.

- 1 Year Limited Warranty -Parts & Labor.
- 120VAC/60Hz 750W International 230VAC/60Hz 750W.
- Distillate Capacity -1 Gallon (3.79L) in 4.5 Hours. Will Provide Up to 5 Gallons (18.93L) in 24 Hours.

## Optional Accessories and Supplies

- Kleenwise™ Boiler Descaler
- Post Carbon Filter Cartridges
- Extra 1 Gallon Collector/ Storage Bottles

Operational maintenance and replacement requirements are essential for the products to perform as advertised.

The Tuttnauer 9000™ Distiller can save you money when compared to the high cost of bottled water purchases, the cost and inconvenience of lugging cumbersome bottles and the down time of staff needed to travel outside the office.

## A Cost Comparison with Bottled Water

	Distilled Water**	Tuttnauer Distilled**	Your Saving
Cost per Gallon	\$0.89	\$0.25	\$0.64

\*Based on comparison shopping. \*\*Based on the U.S. Department of Energy national electrical cost averages.

## 7000 Series Large Capacity Distillers

- Model 7000\* (3.5 gal System)
- Model 7000-8\* (8 gal System)
- Model 7000-12\* (12 gal System)



Technical Specifications		Net Weights	
Width	11" (28cm)	Countertop	3.5 gal. 30lbs.(13.5kgs)
Depth	17" (43cm)	Floor Model	8 gal. 37lbs.(16.5kgs)
Height	3.5 gal. 17" (43cm)	Floor Model	12 gal. 44lbs.(20.0kgs)
	8 gal. 36" (91cm)		
	12 gal. 42" (107cm)		

\*Series 7000 is directly connected to the water supply for continuous operation. Reservoir is designed for front or side mounting of spout. Photo shown with front mounting.



The Tuttnauer 9000™ Features a Removable Boiler for Easy Fill & a Unique Recessed Heating Base to Reduce Scale Buildup

## Technical Specifications for Model 9000

Space Saving Dimensions:

- Width: 9.5" (24.13cm)
- Height: 15" (38.10cm)
- Depth: 16" (40.64cm)
- Distiller Net Weight: 10lbs (4.54 kg)

LTR330-0009/ULF/USA/V-4/09.17



### Tuttnauer USA Co., Ltd.

25 Power Drive, Hauppauge, NY 11788 Tel: +800 624 5836, +631 737 4850, Fax: +631 737 0720  
E-mail: info@tuttnauerUSA.com, www.tuttnauerUSA.com

